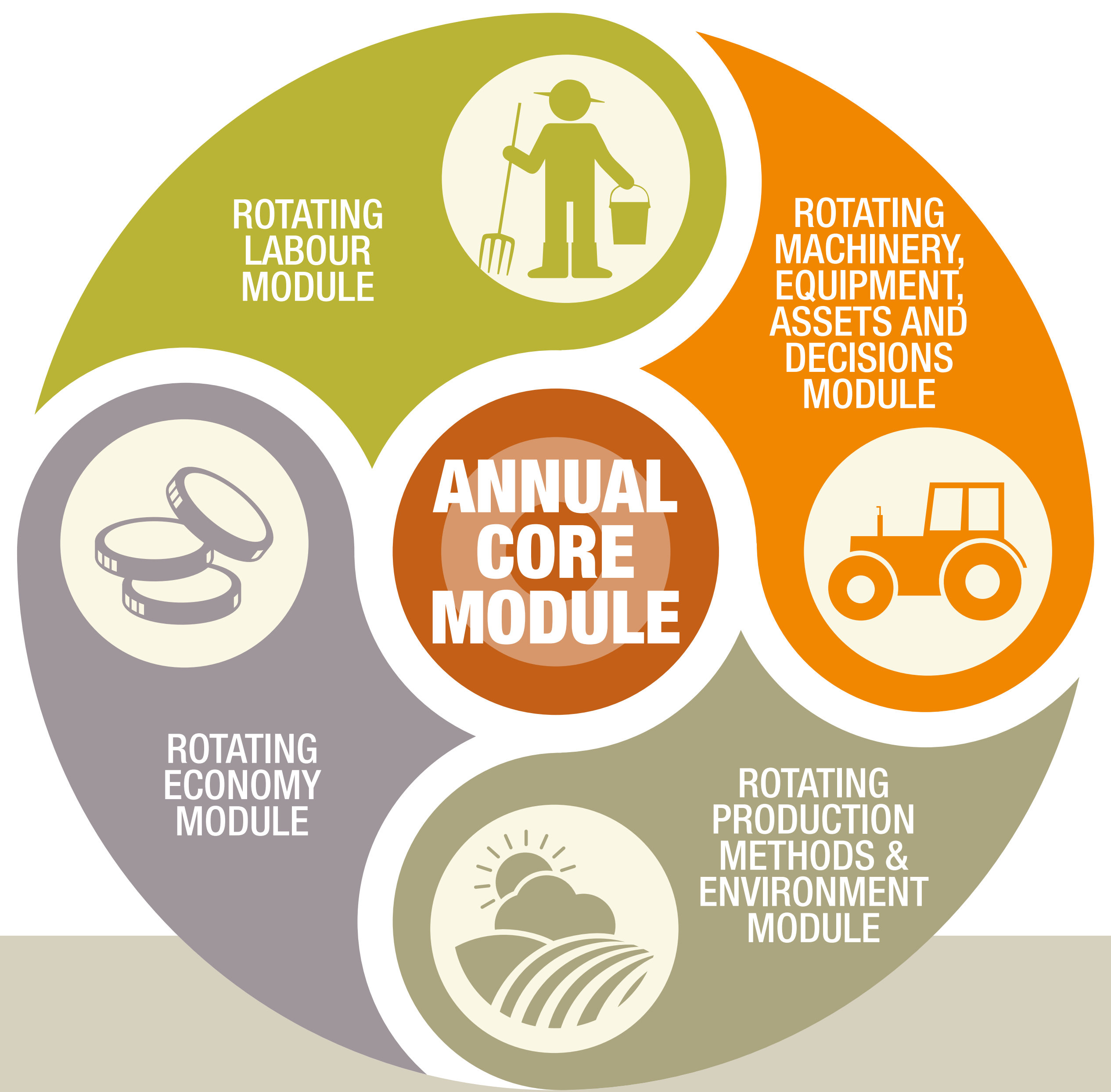


AGRIS

The Agricultural Integrated Survey

Producing cost-efficient data on farms for policymaking



What is AGRIS?

- A new modular 10-year survey programme to generate better and less costly data on farms
- Proposed to countries for further customization and national implementation
- Informs national policies and responds to SDG requirements



CORE MODULE

- CROP AND LIVESTOCK PRODUCTION AND SEASONALITY
- KEY DATA ON HOLDING INPUTS AND PRODUCTION METHODS
- SHOCKS AND RESILIENCE



ECONOMY MODULE

- Farm budgets, revenues, and expenses
- Productivity
- Diversification
- Commodity transformation
- Off-farm wages
- Farmers' selling practices



LABOUR MODULE

- Volume of labour input
- Organization of labour on the farm
- Age- and sex-specific profiles and related roles
- Household members' participation in all forms of work



PRODUCTION METHODS & ENVIRONMENT MODULE

- Land use
- Crop and livestock production systems
- Soil and manure management
- Energy
- Irrigation
- Organic farming
- Biodiversity
- Climate change



MACHINERY, EQUIPMENT, ASSETS AND DECISIONS MODULE

- Quantity, type and ownership of equipment and machinery
- Assets
- Decision making, with a special focus on gender

A REGULAR FLOW OF TIMELY AND INTEGRATED DATA:

- Policy relevant
- Sex-disaggregated
- To identify challenges in production, productivity and resilience
- Anonymized microdata available



for
**DATA
USERS**



for
**DATA
PRODUCERS**

INNOVATION, GUIDELINES AND SUPPORT:

- Methodological innovations
- Standard definitions, concepts and classifications
- CAPI technology
- Technical assistance to build capacity
- Financial support

WHAT IS NEW?